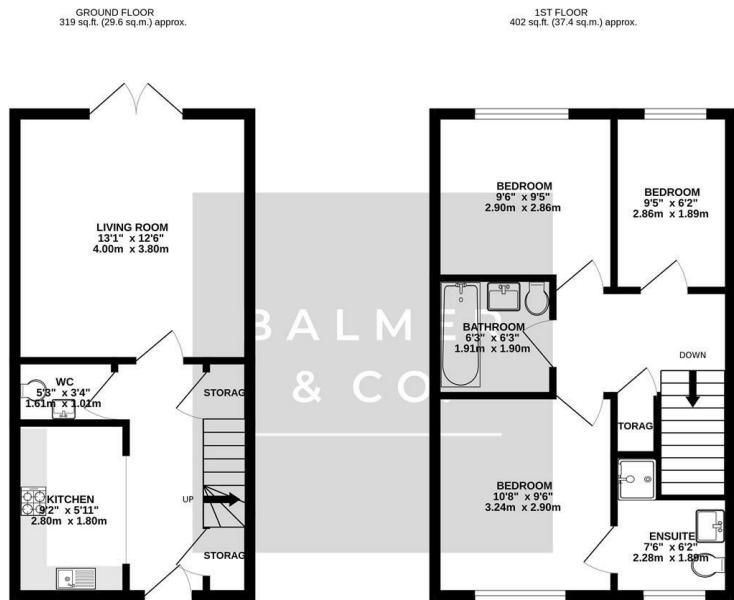


North Fold Close, Tyldesley, M29 8SE
Offers Over £250,000



BALMER & CO in TYLDESLEY are delighted to offer FOR SALE this fantastic three bedroom mid-terrace house located on the ever popular Garret Meadows development in Mosley Common, Tyldesley. Very nicely presented throughout this property comprises in brief of entrance hallway, large living room with French doors leading to the rear garden, modern fitted kitchen, with a W.C, completing the ground floor. To the first floor is a large master bedroom with ensuite shower room, second double bedroom, third single bedroom, with a three piece family bathroom completing the accommodation on offer. Externally there is a double driveway to the front for two vehicles, whilst to the rear there is a fully enclosed, South facing rear garden. Early viewings highly recommended, all enquiries welcome.

Floor Plan

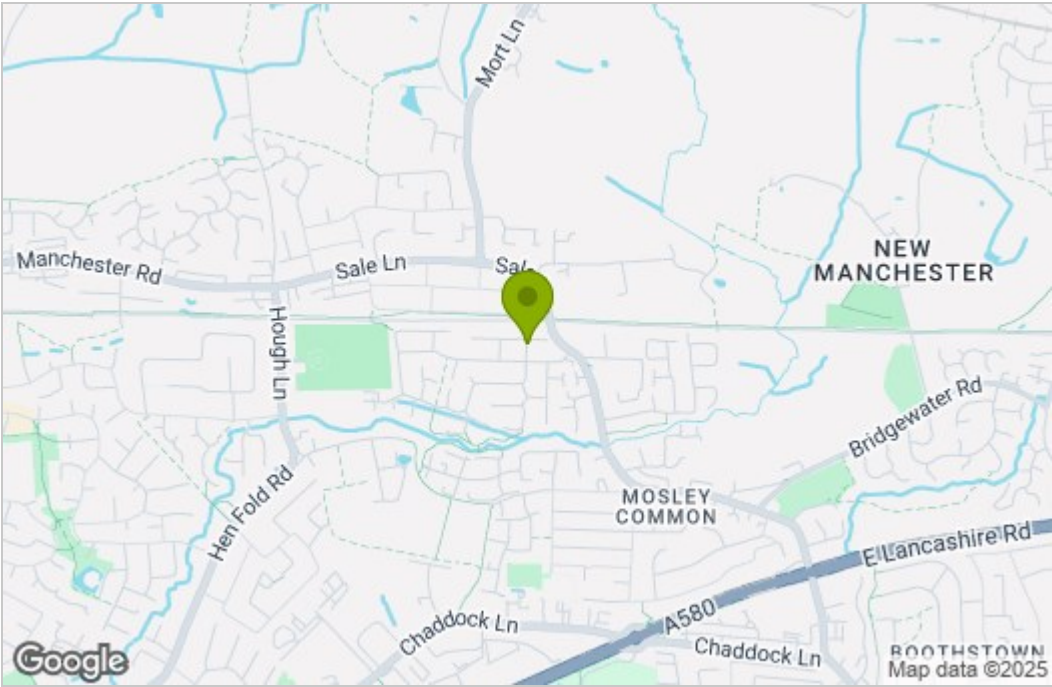


TOTAL FLOOR AREA: 721 sq.ft. (67.0 sq.m.) approx.

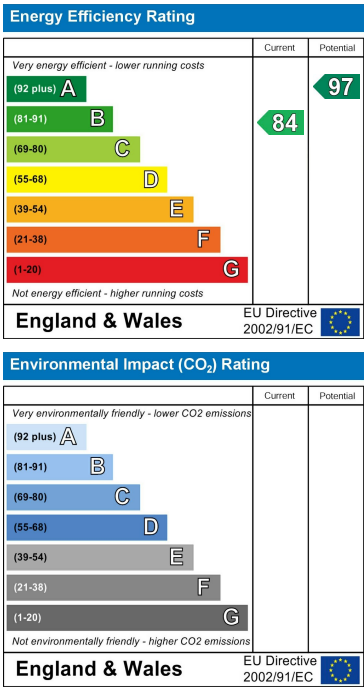
Whilst every attempt has been made to ensure the accuracy of the figures contained here, measurements of doors, windows, rooms and any other items are approximate and no responsibility is taken for any error, omission or misstatement. This plan is for illustrative purposes only and should be used as such by any prospective purchaser. The services, systems and appliances shown have not been tested and no guarantee as to their operability or efficiency can be given.

Made with Metrepro ©2025

Area Map



Energy Efficiency Graph



These particulars, whilst believed to be accurate are set out as a general outline only for guidance and do not constitute any part of an offer or contract. Intending purchasers should not rely on them as statements of representation of fact, but must satisfy themselves by inspection or otherwise as to their accuracy. No person in this firm's employment has the authority to make or give any representation or warranty in respect of the property.